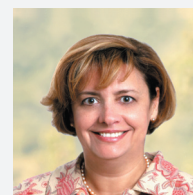


HLA Typing

The HLA and Immunogenetics Laboratory at Quest Diagnostics Nichols Institute provides state-of-the-art HLA typing for hematopoietic stem cell/bone marrow transplantation, tumor vaccination, and immunotherapy.

- Low/intermediate resolution typing by PCR-SSO (sequence specific oligonucleotides)
- High resolution sequence based typing (SBT)
- National laboratory benefits
 - The convenience of our nationwide Patient Service Centers
 - Samples are typed in a single central laboratory for ease of integrating results
- Clinical and scientific consultation services

Under Maria Bettinotti, PhD, D(ABHI), the mission of the HLA Laboratory is to offer the highest level of laboratory testing and clinical/scientific consultation in order to promote the best possible patient care. Dr. Bettinotti is board certified by the American Board of Histocompatibility and Immunogenetics (ABHI) and accredited as Laboratory Director by the American Society of Histocompatibility and Immunogenetics (ASHI). After obtaining a Ph.D. in Human Biology from the Ludwig-Maximilians-Universitaet, Munich, she pursued a post-doctoral fellowship at the University of California, Los Angeles, focused on HLA sequence-based typing.



Dr. Bettinotti joined the National Institutes of Health as staff scientist at the Department of Transfusion Medicine in 1996. The focus of her work has been both clinical and research, first as a member of the HLA laboratory and later starting the Molecular Immunology Laboratory. She has published more than 30 scientific papers in her specialty.

HLA Tests

Test Name	Test Code	Panel Code
HLA-A Class I DNA Typing, Intermediate Resolution	10951X	15757X
HLA-B Class I DNA Typing, Intermediate Resolution	10950X	
HLA-C Class I DNA Typing, Intermediate Resolution	15463X	15484X
HLA-DRB1 Class II DNA Typing, Intermediate Resolution	10952X	
HLA-DQB1 Class II DNA Typing, Intermediate Resolution	10953X	15485X
HLA-A High Resolution SBT Typing	17397X	
HLA-B High Resolution SBT Typing	17396X	
HLA-C High Resolution SBT Typing	17395X	
HLA-DRB1 High Resolution SBT Typing	17393X	
HLA-DQB1 High Resolution SBT Typing	17394X	
HLA-A2 Typing with reflex A2 High Resolution SBT Subtyping	17398X	

HLA Laboratory: 800-336-3718 X5845
HLA@questdiagnostics.com

P.O. Box 10841
14225 Newbrook Drive
Chantilly, VA 20153-0841
703-802-6900
800-336-3718
www.questdiagnostics.com

Quest, Quest Diagnostics, the associated logo, Nichols Institute, and all associated Quest Diagnostics marks are the trademarks of Quest Diagnostics.
© 2006 Quest Diagnostics Incorporated.
All rights reserved.
HS0018 11/2005



Nichols Institute